

Hydraulic Jacks & Tools Accessories

**MY
Manifolds**

700 bar

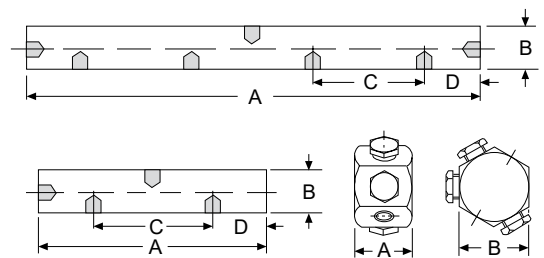
Manifolds are used when several hydraulic cylinders have to be connected to one hydraulic pump. All manifolds are equipped with 3/8 NPT inner oil ports, so that fittings, hydraulic hoses and couplers can easily be attached. To connect a manifold directly to a hand pump a FY-1 double nipple is recommended.

Each manifold is supplied with three steel blind plugs in case not all the oil ports are required.



Technical data MY

Model	Art.-No.	Oil ports	Weight kg
MY-1	N14100164	6 x 3/8-NPT inner	0.5
MY-2	N14100247	4 x 3/8-NPT inner	0.6
MY-4	N14100198	7 x 3/8-NPT inner	1.4



Dimensions MY

Model	MY-1	MY-2	MY-4
A, mm	40	150	330
B, mm	50	40	40
C, mm	-	90	90
D, mm	-	30	30

Hydraulic Jacks & Tools Accessories



MY Manifolds

With shut-off valve, 700 bar

Manifolds with shut-off valves are used when different pressures must be maintained in each hydraulic line and therefore allow the lifting of unequal loads. The manifolds are fully assembled and can be screwed directly to a hand pump or power pack. Depending on the way of assembly a short hose HHC-10 and a coupler half CFY-1 can be helpful.

Manifolds models MY ... GYA are equipped with the corresponding number of shut-off valves plus pressure gauge sets (GYA-63) which allow a permanent reading of each individual load.

Technical data MY

Model	Art.-No.	Version	Weight kg
MY-22	N14100503	2-way manifold with 2 shut-off valves	1.8
MY-44	N14100504	4-way manifold with 4 shut-off valves	3.7
MY-66	N14101056	6-way manifold with 6 shut-off valves	5.5
MY-22-GYA	N14101024	2-way manifold with 2 shut-off valves and 2 pressure gauges	2.8
MY-44-GYA	N14101025	4-way manifold with 4 shut-off valves and 4 pressure gauges	5.7
MY-66-GYA	N14101057	6-way manifold with 6 shut-off valves and 6 pressure gauges	8.5

Assembly examples:



Hand pump HPS-2/2 A with MY-44



Electric hydraulic pump PY-07/3/20/3 M with VSM-21 and MY-44